

# Configuration and Development

## BENEFITS

### Maximize your network potential.

Make the most out of your network resources and use each of your computers to its full potential through the power of distributed processing.

### Improve computer performance.

Reduce the burden on client computers by moving resource-intensive tasks to process servers and using your client workstation processing power for more immediate tasks.

### Increase office productivity.

Help eliminate slowdowns and delays by transferring tasks that take up large amounts of processing power—such as posting or printing checks—to dedicated computers.

### Expand as much as you need.

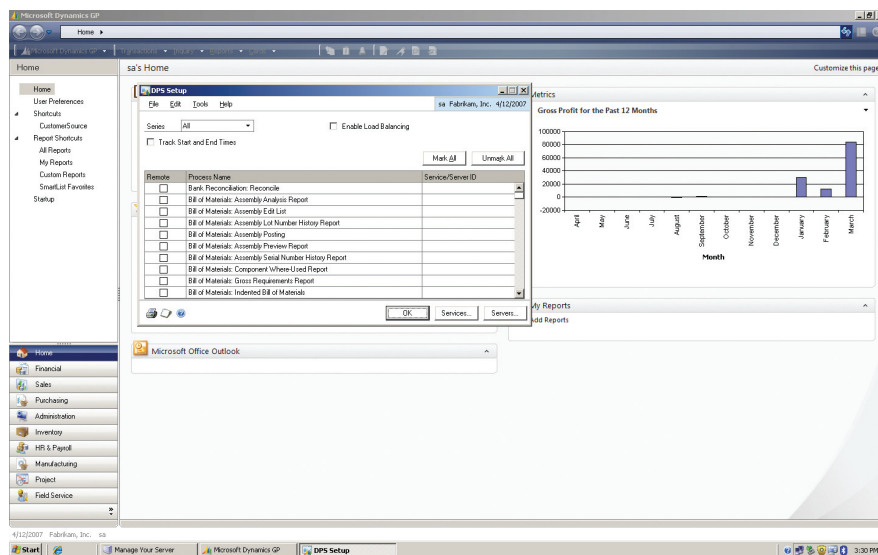
Set up as many process servers as you need to accommodate your specific business needs, with an option for load balancing. The number of servers you can set up is limited only by your own internal network.

### Incorporate your entire system.

Apply distributed processing across your entire system with smooth interaction between each process server and your Microsoft Dynamics GP server and client workstations.

## Process Server in Microsoft Dynamics GP

Move processor-intensive tasks off the computers your employees use every day and onto dedicated process servers, avoiding costly slowdowns and vastly improving computer performance.



*REDUCE SLOWDOWNS AND DELAYS by transferring business processes that require a large amount of processing power to dedicated computers.*

## FEATURES

## PROCESS SERVER

<b>Separate Heavy Processing Tasks</b>	Take advantage of the faster processing capabilities of powerful computers on your network by distributing tasks that require a large amount of processing power—such as posting or printing checks—onto separate computers.
<b>Process Tasks</b>	Easily send tasks from remote locations to distributed process servers on a case-by-case basis or specifically designate which tasks will be completed on the remote computers.
<b>Utilize Both Dedicated and Non-Dedicated Machines</b>	Designate remote computers as dedicated process servers for greater processing ability or use them as client computers as well, depending on your specific business needs.
<b>Expand as Needed</b>	Set up as many process servers as necessary for your business needs, with an option for load balancing. The number of servers you can set up is limited only by your internal network protocols.
<b>Install and Set Up</b>	Efficiently install Process Server on your system in conjunction with other Microsoft Dynamics GP modules and applications. Easily specify which tasks are to be completed remotely, as well as to which process servers or load balance queue each task is to be sent.

For more information about Process Server in Microsoft Dynamics GP, visit [www.microsoft.com/dynamics/gp](http://www.microsoft.com/dynamics/gp).

© 2007 Microsoft Corporation. All rights reserved. Microsoft, Microsoft Dynamics, and the Microsoft Dynamics logo are either registered trademarks or trademarks of Microsoft Corporation in the United States and/or other countries. This document is for informational purposes only.



Isis, Inc. P.O. Box 70460,  
Richmond, VA 23255, 804-762-4200

**Microsoft**